

## Photography

Composition	The way different elements of a picture are arranged.
Contrast	To demonstrate the obvious difference between two things.
Crop (verb)	To cut something down to size.
Digital	When something is done using a computer or electronic device.
Expression	Conveying a particular emotion or feeling within a piece of art.
Lens	Glass fittings for the end of a camera, which enable the device to take photographs from various ranges.
Macro	A type of camera lens which allows you to see and capture very small details and objects.
Photography	The art of taking photographs.
Self portrait	Art which is created by the artist of themselves.
Technique	A way of doing something to complete a task.
Truism	Based on fact, something which is clearly true.

## Key facts

Photomontage is a type of collage in which photographs are placed into a single composition.



The 'frame' in photography, refers to the way you plan the composition to draw attention to something.



Contemporary artists are artists who are alive and currently making art work.

An example of a photo taken with a macro lens.



## Artists' work looked at:

Kapou  
Primar



Artwork © DACS 2020,  
Da Dandy, Hannah Hoch, 1919  
(photomontage),  
Photo © Bridgeman Images

### Hannah Hoch

A German Dada artist. She was one of the originators of photomontage during the Weimar period.


### Peter Kennard

A contemporary British photomontage artist.

### Jerry Uelsmann

A contemporary American photomontage artist.

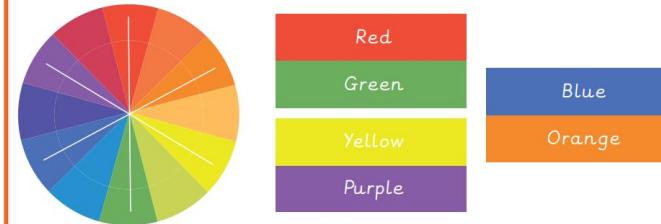
## Make my voice heard

Abstract	Art which does not represent images of our everyday world. It has colour, lines and shapes (form), but is not intended to represent objects or living things.
Chiaroscuro	The darkening of the background around the face and the adding of shadows.
Composition	The placement or arrangement of the different elements, or 'things' within a work of art.
Figurative	Modern art which has strong references to the real world, particularly to the human figure.
Graffiti Art	Drawings or words made on a surface on a public place, often created with spray paint. If the owner of the property has not given permission, then this is considered vandalism, which is illegal.
Parallel lines	Two lines that are the same distance apart and never touch.
Serif 	A small decorative line added to the basic shape of a letter.
Symbolism	Using an object or a word to represent an idea.
Tag	A stylised signature. The simplest and the most common type of graffiti.

## Key facts

Kapow  
Primary

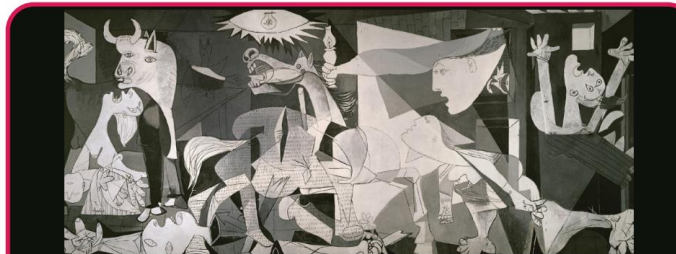
Complementary colours are directly opposite each other on the colour wheel.



I can shade using pencil to create shadows, degrees of light and dark and a 3D effect.



Cubism ignores perspective and artists paint their subjects from lots of different angles.



**Pablo Picasso** A Spanish artist who co-founded the Cubism art movement with artist Georges Braque in 1909.  
Artwork © Succession Picasso/DACS, London 2020, Pablo Picasso, Guernica, 1937 (oil on canvas), Photo © Bridgeman Images

## Artists' work looked at:



**Kathe Kollwitz**  
A German artist who worked with painting, printmaking and sculpture.  
© Bridgeman Images



**Mark Wallinger**  
A contemporary British artist.

**David Shrigley** A contemporary British visual artist.



## Still life

Cartoon or graphic	A two-dimensional illustration.
Charcoal	A dark drawing material that crumbles easily.
Colour wheel	A circular chart that shows primary, secondary and tertiary colours.
Composition	Where things are placed within a piece of artwork.
Greyscale	A range of tones from light to dark.
Hue	Describes the colour within a spectrum.
Negative image	The reverse of an image (the positive image).
Sketching	A light, fast sketch which is often used for planning a piece of artwork.
Still life	A collection of objects which are arranged to then draw from.
Underpainting	Preparing the painting surface and to give something to paint on to.
Visual minutes	Visual minutes (also called 'graphic recording' or 'scribing' is a live, illustrated record of what is heard.

## Key facts

Kapow  
Primary

Font means the size, shape and style of lettering.



In a negative image, the dark areas are light and the light areas are dark.



## Artists' work looked at:



**Jaromir Funke**

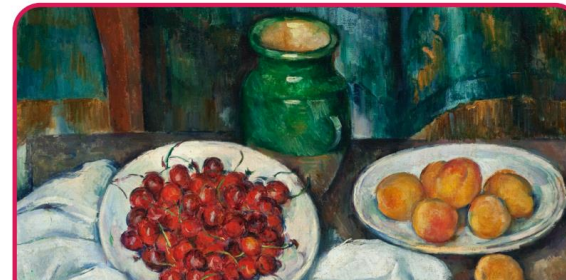
A leading photographer from Czechoslovakia during the 1920s and 1930s.  
Photo © Christie's Images / Bridgeman Images



**Ben Nicholson**

An English painter who painted abstract compositions, landscape and still-life.

Artwork © Angela Verren Taunt. All rights reserved, DACS 2020, Ben Nicholson, 1949 (still life), Photo © Christie's Images / Bridgeman Images



**Paul Cezanne**

A French artist and Post-Impressionist painter.

© Bridgeman Images

**Iberê Camargo** An expressionist painter from Brazil.